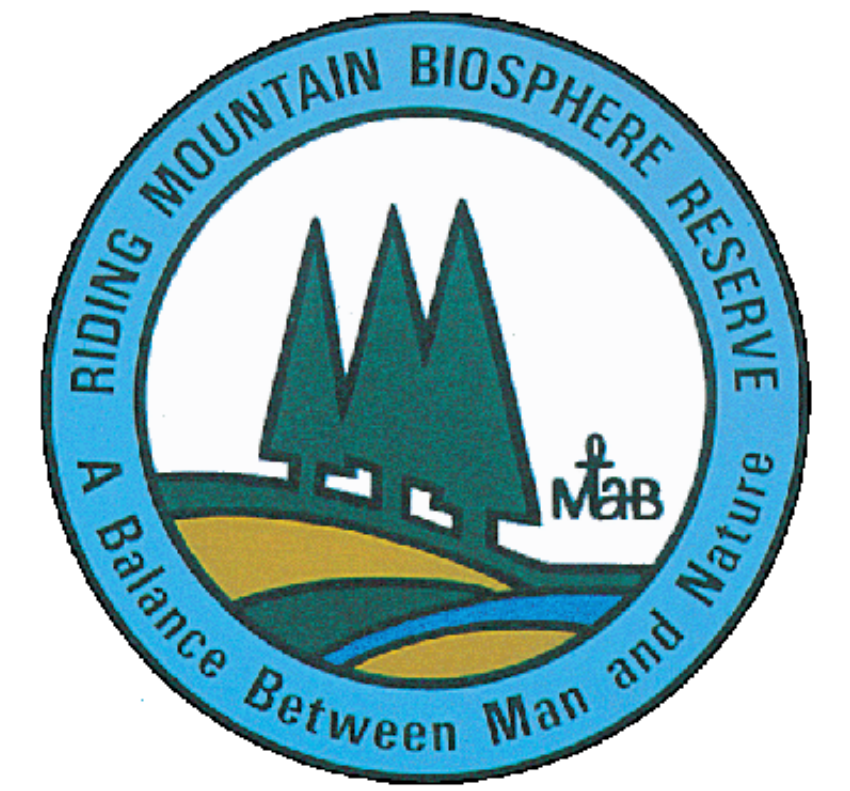


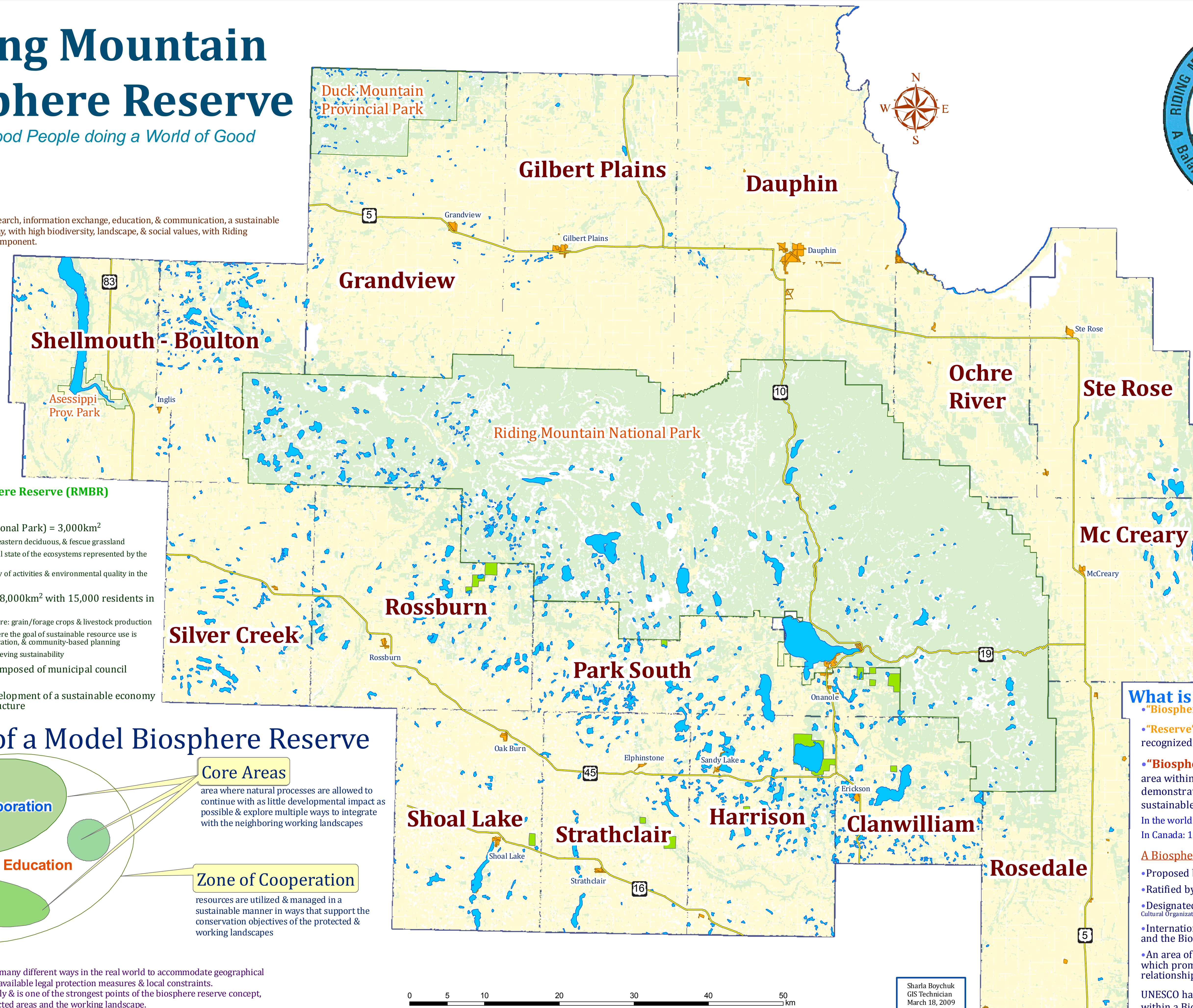
# Riding Mountain Biosphere Reserve

*A World of Good People doing a World of Good*



## Mission:

To foster & encourage, through research, information exchange, education, & communication, a sustainable community-based regional economy, with high biodiversity, landscape, & social values, with Riding Mountain National Park as a key component.



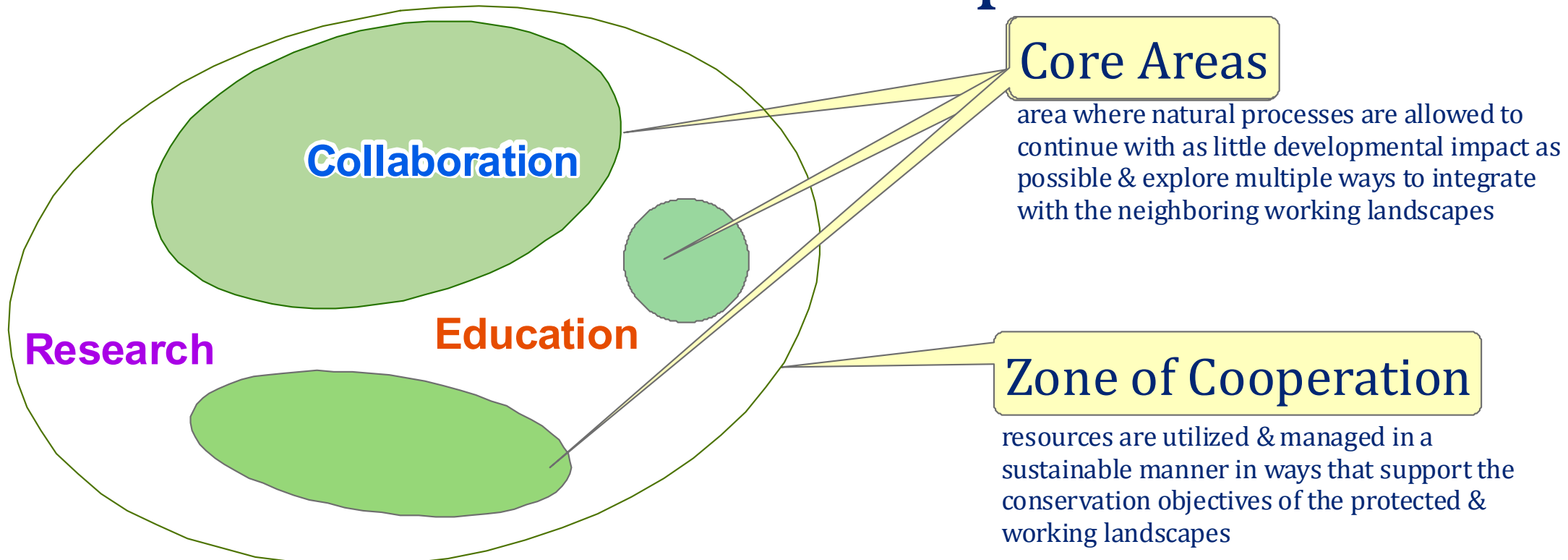
## Riding Mountain Biosphere Reserve (RMBR)

- Designated in 1986
- **Core** (Riding Mountain National Park) = 3,000km<sup>2</sup>
  - Consists of mixedwood forest, eastern deciduous, & fescue grassland
  - A reference point on the natural state of the ecosystems represented by the Biosphere Reserve
  - Used to assess the sustainability of activities & environmental quality in the working landscape
- **Zone of Cooperation** = 28,000km<sup>2</sup> with 15,000 residents in 15 municipal councils
  - Largely developed for agriculture: grain/forage crops & livestock production
  - Where people live & work - where the goal of sustainable resource use is explored through research, education, & community-based planning
  - Cooperation is essential to achieving sustainability
- Managed by a committee composed of municipal council appointees
- The RMBR assists in the development of a sustainable economy & sustainable community structure

## Legend

- Water Bodies
- Grasslands/Agriculture
- Forested
- Wildlife Mgmt Areas
- Towns
- Highways

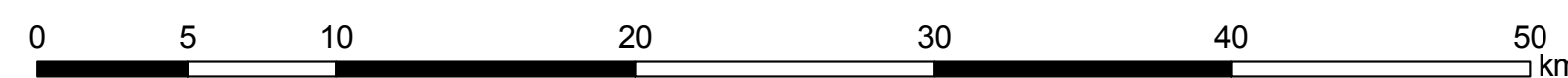
## Structure of a Model Biosphere Reserve



## What is a Biosphere Reserve?

- **"Biosphere"** – 'sphere of life'
  - **"Reserve"** – an important area of the world recognized for its special qualities
  - **"Biosphere Reserve"** – highlights a special area within the biosphere where people demonstrate better approaches to conservation & sustainable resource use
- In the world: 529 Biosphere Reserves in 105 Countries  
In Canada: 15 Biosphere Reserves in 8 provinces
- A Biosphere Reserve is:**
- Proposed by its residents
  - Ratified by a national committee
  - Designated by UNESCO (United Nations Educational, Scientific & Cultural Organizations)
  - Internationally recognized under UNESCO's Man and the Biosphere (MAB)
  - An area of terrestrial & coastal marine ecosystems which promote & demonstrate a balanced relationship between people & nature

This zonation scheme is applied in many different ways in the real world to accommodate geographical conditions, socio-cultural settings, available legal protection measures & local constraints. This flexibility can be used creatively & is one of the strongest points of the biosphere reserve concept, facilitating the integration of protected areas and the working landscape.



Sharla Boychuk  
GIS Technician  
March 18, 2009